

Distribution solutions

Fibrain wall mounted distribution cabinet NSR-xx



INTRODUCTION:

Fibrain wall mounted distribution cabinet NSR-xx are specifically designed and tailored to meet our customers' need. Fibrain NSR-xx cabinet constructed of high quality materials ensuring very easy installation and maintenance. Cabinet's design with interior perforation provides flexible organization of the fibers inside a cabinet. Fibrain wall mounted cabinets are available in three different sizes and can be equipped with easy demountable plate for mounting different types of fiber optic adapters. The cabinet capacity is up to 24 splices for small unit, 72 for medium unit and 96 splices for large version. Cylinder lock protects the interior of the cabinet against unauthorized access.

APPLICATION:

Telecommunication systems;
FTTH networks;
Distribution point of the FTTx networks;

FEATURES & BENEFITS:

Compact design;
Available in three different sizes;
Access protection with cylindrical lock
Wide range of adapters plate available
Cable entry sealed with foam or cable glands

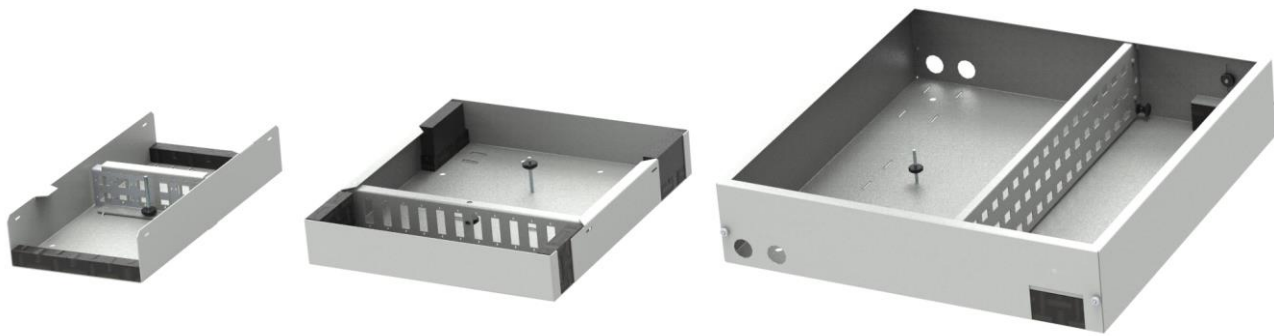
TECHNICAL SPECIFICATION:

Technical specification	NSR-S-xx	NSR-M-xx	NSR-L-xx
Height [mm]	256	325	445
Width [mm]	150	285	445
Depth [mm]	55	55	100
Max. splice trays capacity	1	3	4
Max. number of splices*	12/24	36/72	48/96
Max. number of users	16	24	96
Max. number of entry cables	4	6	6
Cable gland qty	-	-	4
Cable gland type	-	-	PG 13,5
Working temperature	-20°C - +50°C	-20°C - +50°C	-20°C - +50°C
Casing material	Powder painted steel		
Color	Grey RAL7035		

* depending of the splice cassette type

Type:	Indoor cabinet	
Ref:	NSR-xx	REV: 1.3
Date:	07.11.2016	BR
Modification:	21.10.2019	DP

Distribution solutions



NSR-S

NSR-M

NSR-L

Internal view of cabinet

ADDITIONAL EQUIPMENT:

Fiber splice tray for 12 splices	SCM-A-12H	
Fiber splice tray for 24 splices	SCM-A-24H	
Adapters	Axxx	
Cable gland	DL13.5	
Adapters panels		
NSR-S	12xSC Simplex	FB2100
	4xSC Duplex	FB2101
	8xST/FC Simplex	FB2102
	8xSC Duplex	FB2103
NSR-M	12xSC Duplex	FB2104
	12xST/FC Simplex	FB2105
	24xST/FC Simplex	FB2106
	24xSC Simplex	FB2107
NSR-L	48xST/FC Simplex	FB2043
	48xSC Simplex	FB2044
	48xSC Duplex	FB2045
	72xSC Simplex	FB2046
	72xST/FC Simplex	FB2047

ORDERING INFORMATION:

NSR-X-AA-BBCDE-FFGHHIJJ-KL-MN ORDERING SYNTAX:

X – Cabinet size

- S – FB1401 (small unit)
- M - FB1402 (medium unit)
- L – FB1403 (large unit)

AA – Adapter panels type

- 01 - FB2101 - 4xSC Duplex
- 02 - FB2102 - 8xST/FC Simplex
- 03 - FB2103 - 8xSC Duplex
- 04 - FB2104 - 12xSC Duplex
- 05 - FB2105 - 12xST/FC Simplex
- 06 - FB2106 - 24xST/FC Simplex
- 07 - FB2107 - 24xSC Simplex
- 09 - FB2043 - 48xST/FC Simplex
- 10 - FB2044 - 48xSC Simplex
- 11 - FB2045 - 48xSC Duplex
- 12 - FB2046 - 72xSC Simplex
- 13 - FB2047 - 72xST/FC Simplex
- 14 – FB2100 – 12xSC Simplex

BB – Adapters qty 0-96

C – Adapter class

- 1 – Standard One-Piece (as well for E2000, FC, ST)
- 2 – Premium Super One-Piece
- 3 – Premium One-Piece with internal shutter
- 4 - Premium Super One-Piece with internal shutter
- 5 – Premium (@FC, ST)

Type:	Indoor cabinet	
Ref:	NSR-xx	REV: 1.3
Date:	07.11.2016	BR
Modification:	21.10.2019	DP

Distribution solutions

D – Adapter type	<ul style="list-style-type: none"> 1 – SC 2 – SCA 3 – E2000 4 – E2000 APC 5 – LC 6 – LCA 7 – FC 8 – FCA 9 – ST
E – Transmission	<ul style="list-style-type: none"> 1 – SM 2 – MM (beige @SC/LC, black @E2000) 3 – MM OM3 (aqua @SC/LC) 4 – MM OM4 (violet @SC/LC)
FF – Pigtails qty	4-96
G – Fiber type	<ul style="list-style-type: none"> A – G.652D B – G.655 C – G.656 D – G.657A1 E – G.657A2 F – G.657B2 G – G.657B3 H – MM OM1 I – MM OM2 K – MM OM3 L – MM OM4
HH – Connector type	<ul style="list-style-type: none"> 01 – SC 02 – SCA 03 – LC 04 – LCA 05 – FC 06 – FCA 07 – E2 08 – E2A 09 – ST
I – Pigtail grade	<ul style="list-style-type: none"> G – Gold T – Titanium
JJ – Colour identification	<ul style="list-style-type: none"> 01 – for pigtails with yellow 0.9mm buffer 02 – for pigtails with orange 0.9mm buffer 03 – T TELECOM (acc. to IEC60304) 04 – T1 TELECOM (acc. to 60304/tab. 3 & ZN-11/TPSA-005-02) 05 – T2 TELECOM (acc. to z EIA 598A) 06 – D DATACOM (acc. to DIN VDE 0888 & IEC 60304) 07 – D1 DATACOM (acc. to IEC 60304, TIA/EIA 598-A, TIA/EIA 598-C) 08 – for pigtails with aqua 0.9mm buffer 09 – for pigtails with green 0.9mm buffer 10 – for pigtails with violet 0.9mm buffer
K – splice tray qty	1-4
L – splice tray type	<ul style="list-style-type: none"> 1 – SCM-A-12H 2 – SCM-A-24H
M - Cable gland qty	1-4
N - Cable gland type	1 – PG13.5

Example:

NSR-M-07-24121-24D02G01-21-241-00 – Fibrain NSR-M wall mounted distribution cabinet with adapter panel for 24xSC Simplex, equipped with 24 adapters SCA Standard One-Piece, 24 SCA Gold grade G.657A1 pigtails with 0,9mm yellow, two splice trays with holders for 12 splices.

Important notice

Buyer and/or user of this product has to make sure before using this product that it is suitable for the intended use. All questions of liability relating to this product are subject – in accordance with the prevailing – to the Term of Sale of the selling Fibrain subsidiary.