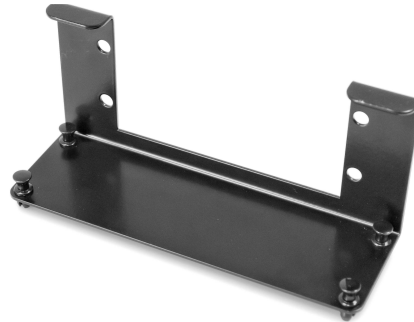


Type:	LOGIWIRE Bracket of adapter panels	26.02.2013 REV: 0
		DK
Code:	FLW-APB-M1	

LogiWire – assembly modules

Bracket of adapter panels



INTRODUCTION:

Fibrain LogiWire is a system that integrates in one place external and internal communications systems. This solution is dedicated for residential construction and small commercial installations.

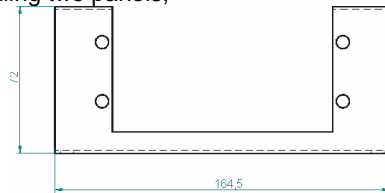
Mounting Modules expand the functionality of the system with the ability to install additional hardware or connection and termination of telecommunication installations.

FEATURES & BENEFITS:

- Aesthetic performance - powder coated sheet,
- Dedicated to mount in LogiWire media boxes,
- Modules mounted vertically or horizontally,
- Assembly On-Click,
- Flexibility - easy to change the position of the panel,
- Służy do rozbudowy systemu LogiWire o dowolne moduły „keystone”

TECHNICAL SPECIFICATION:

- With holes for mounting the dedicated adapter panels,
- Possibility of installing two panels,



ORDERING INFORMATION'S:

FLW-APB-M1 Bracket of adapter panels

Important notice:

Buyer and/or user of this product has to make sure before using this product that it is suitable for the intended use. All questions of liability relating to this product are subject – in accordance with the prevailing – to the Term of Sale of the selling Fibrain subsidiary.