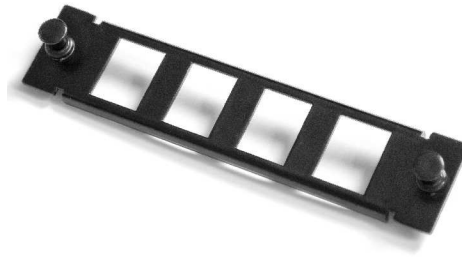


Type:	LOGIWIRE Adapter panels	26.02.2013
		REV: 0
		DK
Code:	FLW-APX-MX	

LogiWire – assembly modules

Adapter panels



INTRODUCTION:

Fibrain LogiWire is a system that integrates in one place external and internal communications systems. This solution is dedicated for residential construction and small commercial installations. Mounting modules expand the functionality of the system with the ability to install additional hardware or connection and termination of telecommunication installations.

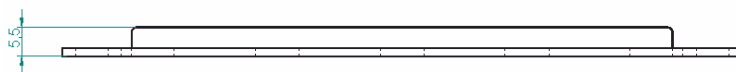
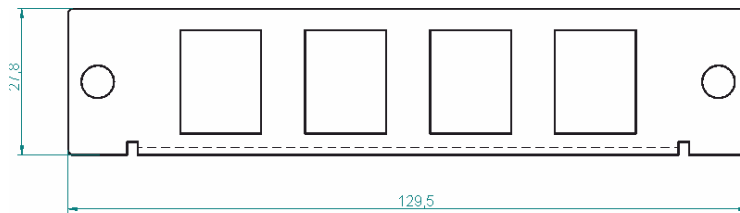
FEATURES & BENEFITS:

- Aesthetic performance - powder coated sheet,
- Dedicated to mount in LogiWire media boxes with dedicated bracket,
- Assembly On-Click,
- Used to extend the Logiwire system with any "keystone" modules,

TECHNICAL SPECIFICATION:

- Possibility of installing two adapter panels in dedicated bracket

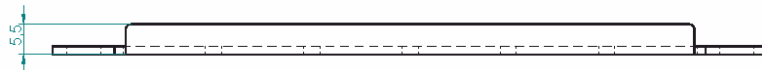
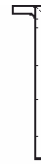
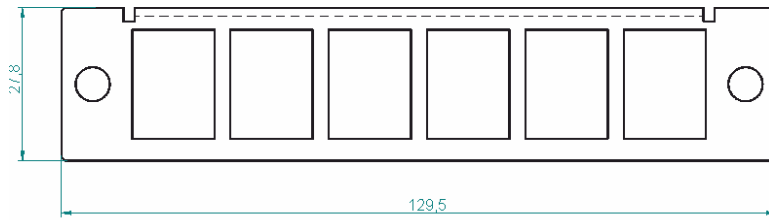
FLW-APK-M4:



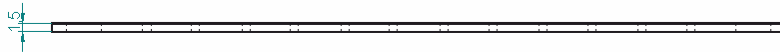
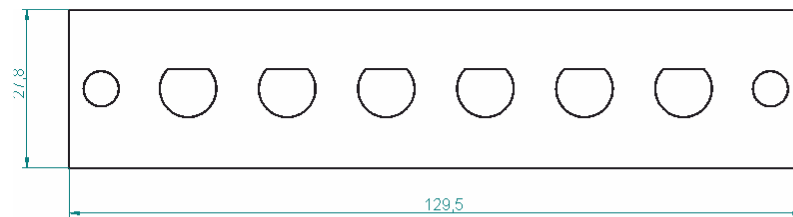
Type:	LOGIWIRE Adapter panels	26.02.2013
		REV: 0
		DK
Code:	FLW-APX-MX	

LogiWire – assembly modules

FLW-APK-M6:



FLW-APF-M6:



ORDERING INFORMATION'S:

FLW-APK-M4	Adapter panel 4xkeystone
FLW-APK-M6	Adapter panel 6xkeystone
FLW-APF-M6	Adapter panel 6xF-connector

Important notice:

Buyer and/or user of this product has to make sure before using this product that it is suitable for the intended use. All questions of liability relating to this product are subject – in accordance with the prevailing – to the Term of Sale of the selling Fibrain subsidiary.