

Type:	LOGIWIRE Masking panels	26.02.2013
		REV: 0
		DK
Code:	FLW-BMP-TX	

LogiWire – assembly modules

Masking panels



INTRODUCTION:

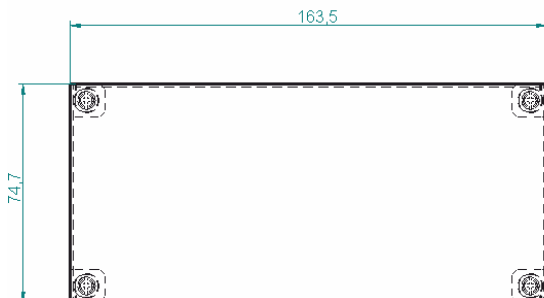
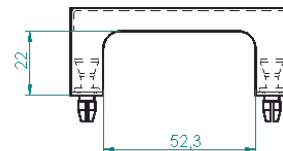
Fibrain LogiWire is a system that integrates in one place external and internal communications systems. This solution is dedicated for residential construction and small commercial installations. Mounting Modules expand the functionality of the system with the ability to install additional hardware or connection and termination of telecommunication installations.

FEATURES & BENEFITS:

- Aesthetic performance - powder coated sheet,
- Dedicated to mount in LogiWire media boxes,
- Modules mounted vertically or horizontally,
- Assembly On-Click,
- Flexibility - easy to change the position of the panel,
- Allows masking cable bundles inside the media box,
- Protection of cable bundles from damage,

TECHNICAL SPECIFICATION:

FLW-BMP-T1:

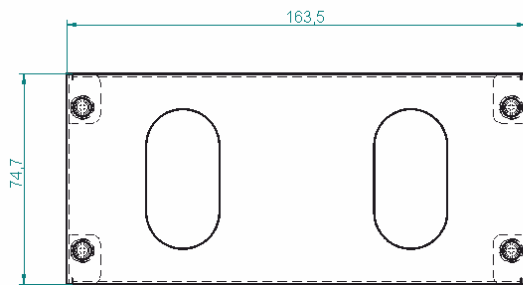
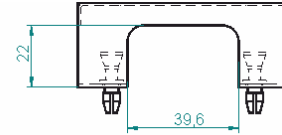


Type:	LOGIWIRE Masking panels	26.02.2013
		REV: 0
		DK
Code:	FLW-BMP-TX	

LogiWire – assembly modules

FLW-BMP-T2:

- Two cable entries,
- Mounting holes for masking panel,



ORDERING INFORMATION'S:

- FLW-BMP-T1** Masking panel solid
FLW-BMP-T2 Masking panel with holes

Important notice:

Buyer and/or user of this product has to make sure before using this product that it is suitable for the intended use. All questions of liability relating to this product are subject – in accordance with the prevailing – to the Term of Sale of the selling Fibrain subsidiary.

